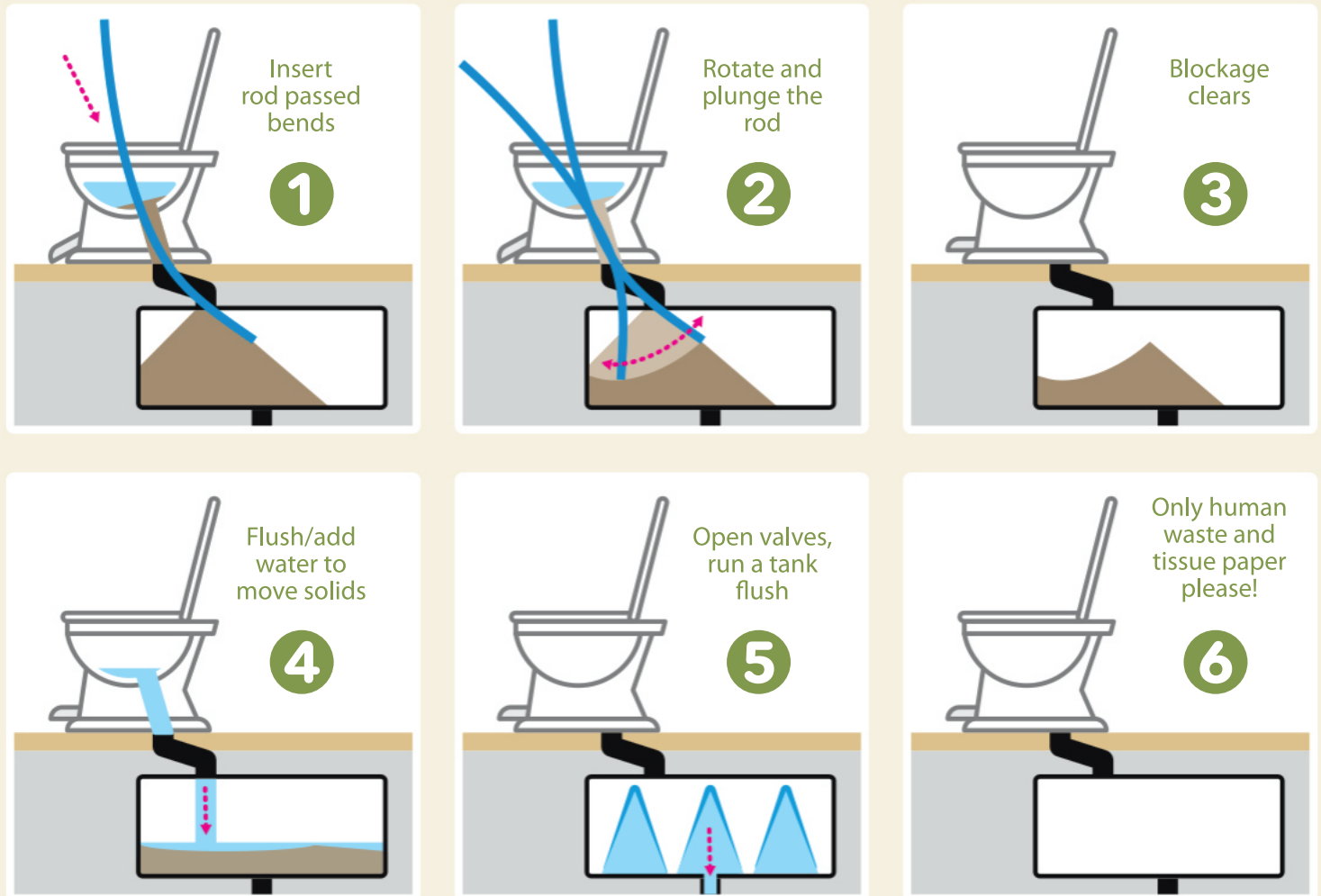


UNBLOCKING YOUR RV LOO

Ask your builders merchant for a length of pipe (MDPE, alkathene, speedfit) you'll need a length of 4½ to 5½ feet, in a diameter of 20-25mm. It is advisable to wear gloves, and for protection from splashing, we recommend a mask, eye protection and a sheet of plastic for your floor. Ask about CCRV's kit which can be kept to hand in your belly locker.



Turn off your water pump, open the cold taps in kitchen and bathroom and protect yourself and the work area against the risk of splashing effluent.

Depress the flush pedal at the front of the toilet, insert the pipe with the bottom curve facing away from you. Push gently until you meet with resistance; this will be the first bend, then twist the pipe 180° while pushing down so the end rotates around into the next bend and out the bottom of the toilet/tank connecting pipe.

Continue to twist the pipe to rotate it and push up and down to move as much solid matter as possible.

When the blockage clears the water in the toilet will drain. Carefully remove the pipe and place in the shower where it can be cleaned and disinfected with a suitable cleaner or bleach.

The build-up of solids will now need softening and evenly dispersing within the black tank. Several flushes and pouring a few pints of water down the toilet will help. Ideally, the black tank itself will now be flushed.

For helpful videos visit us online.